

BROOKLINE HIGH SCHOOL

SCHOOL COMMITTEE MEETING
OCTOBER 17, 2017



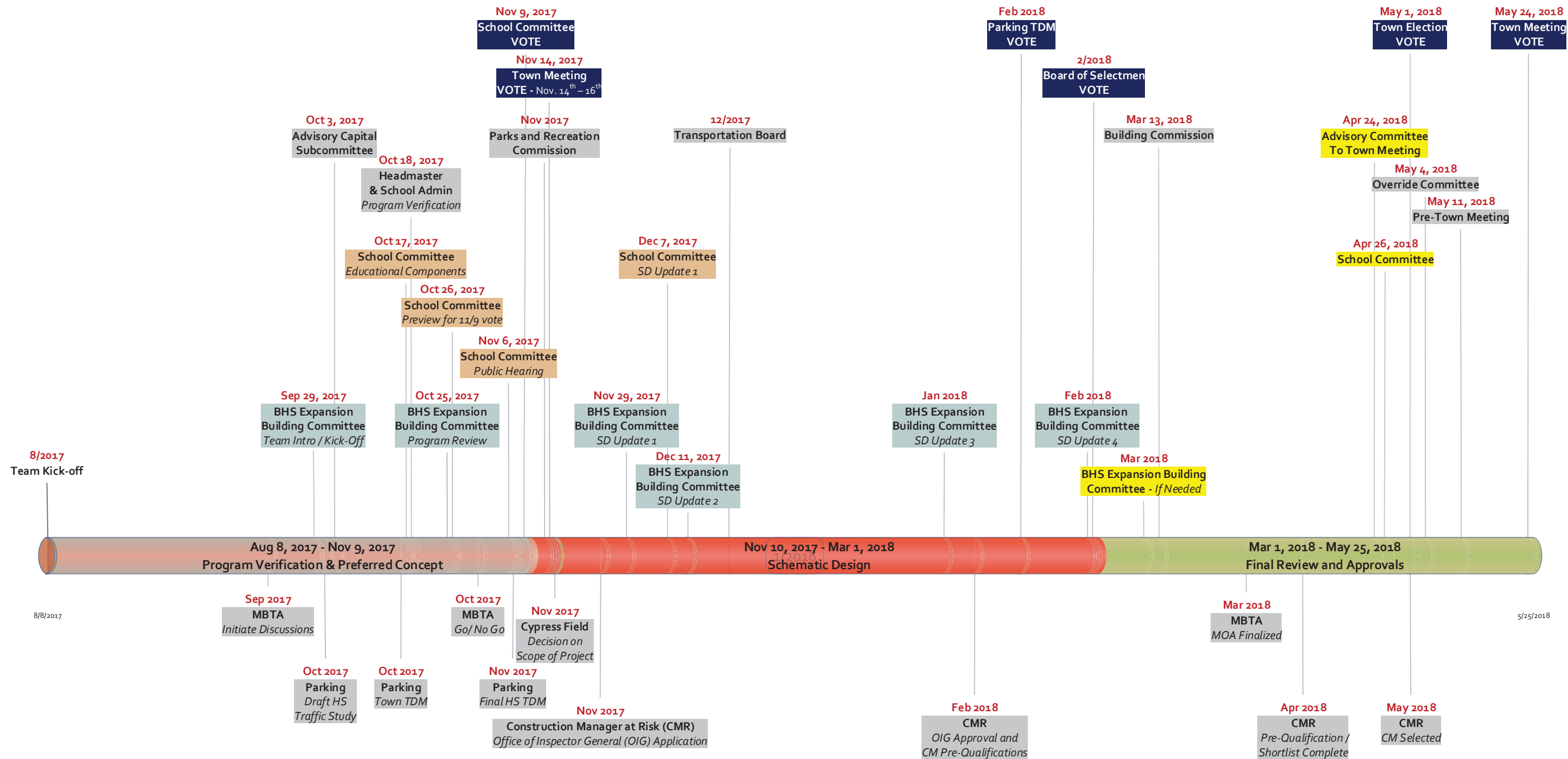
OVERVIEW OF EXECUTIVE LEVEL MASTER SCHEDULE

Brookline High School Expansion Project

DRAFT



Hill International



Key Milestone Dates for Votes

School Committee – Vote on Pedagogy, Program and Space Summary
 Town Meeting – Vote on Acquisition of 111 Cypress
 Parking TDM – Vote on TDM for School and Town
 Board of Selectmen – Vote on Article for Ballot for Election
 Town Election – Vote on Budget Override

November 9, 2017
 November 14th – 16th, 2017
 February, 2018
 End of February, 2018
 May 1, 2018

Other Key Milestones

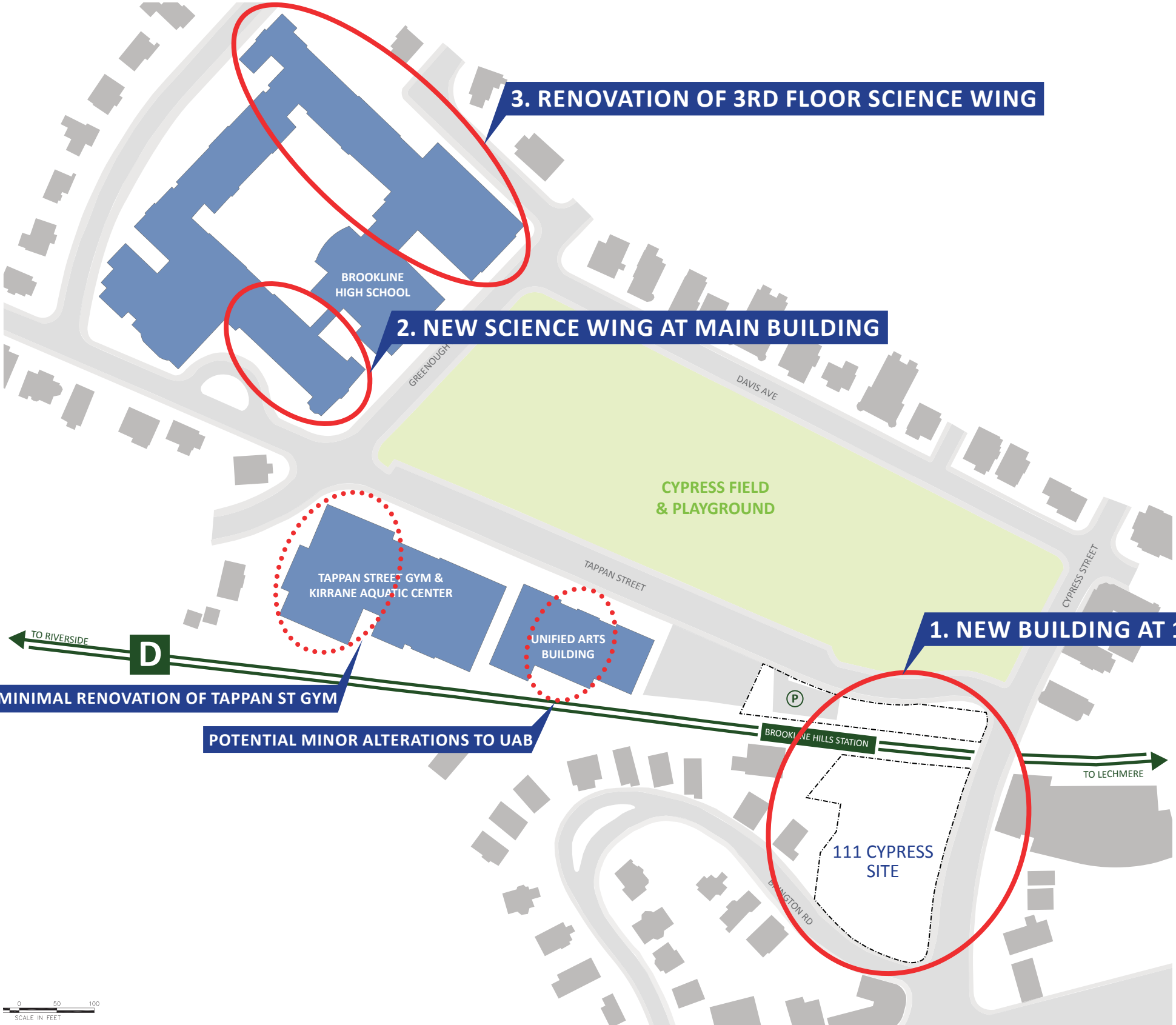
MBTA GO / NO GO
 Office of the Inspector General (OIG) Approval
 MBTA MOA Finalized
 Construction Manager at Risk (CMR) Selected

End of October, 2017
 Early February, 2018
 March 30, 2018
 Mid-May 2018



SCOPE OF PROJECT (AS OF APRIL 2017) - OPTION 4D

NEW CYPRESS BUILDING WITH NEW STEM WING ADDITION & 3RD FLOOR RENOVATION



MAY 2017 FEASIBILITY STUDY COST ESTIMATE

New Cypress Building	58,266,700
over MBTA Allowance	2,000,000
New STEM Wing	32,264,250
3rd Floor Renovation	14,255,750
Construction Contingency	5,339,335
Professional Fees & Services	14,982,271
Misc. Project Costs	6,300,900
Project Contingency	3,203,601
Tappan Gym Minimal Renovation	13,290,000
Project Cost*	149,902,807

* The following items are not included in the Project Cost:

1. Cypress 111 Site Acquisition
2. Cypress Field Renovation
3. Cost associated with a parking strategy
4. Additional MBTA allowance

WHAT IS SCHEMATIC DESIGN?

PRIMARY GOAL: Ensure Program, Design & Budget are Reconciled

SCHEMATIC DESIGN STEPS

1. Program Verification

- Verify space needs
- Understand adjacencies
- Program supports vision

2. Develop Design

- Create options
- Choose preferred scheme
- Develop plan organization, structural & mechanical approach, and facades

3. Cost Management

- Test options against cost benchmarks before choosing the preferred scheme
- Price preferred scheme with enough time to make changes if needed

4. Analysis of Technical Issues

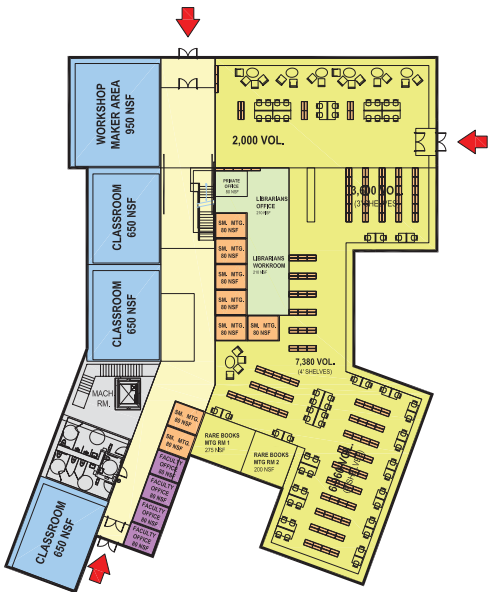
- Ensure technical issues are studied and costs incorporated (MBTA, parking, etc.)



WHAT IS SCHEMATIC DESIGN?

CONCEPTUAL DESIGN PLAN FALL 2016 - SPRING 2017

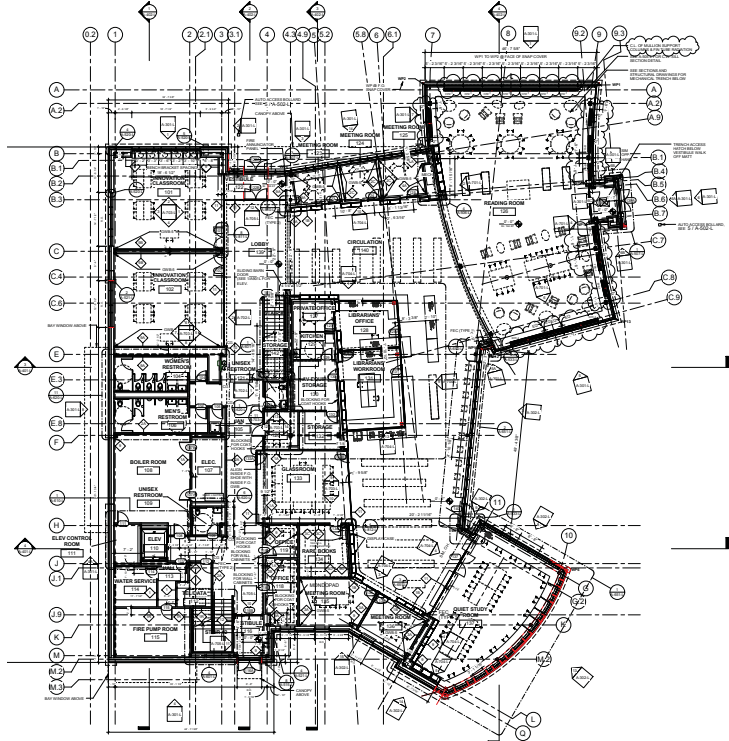
FLOOR PLAN
DEVELOPMENT



LATE SCHEMATIC DESIGN PLAN FALL 2017 - SPRING 2018



CONSTRUCTION DOCUMENTS SUMMER 2019

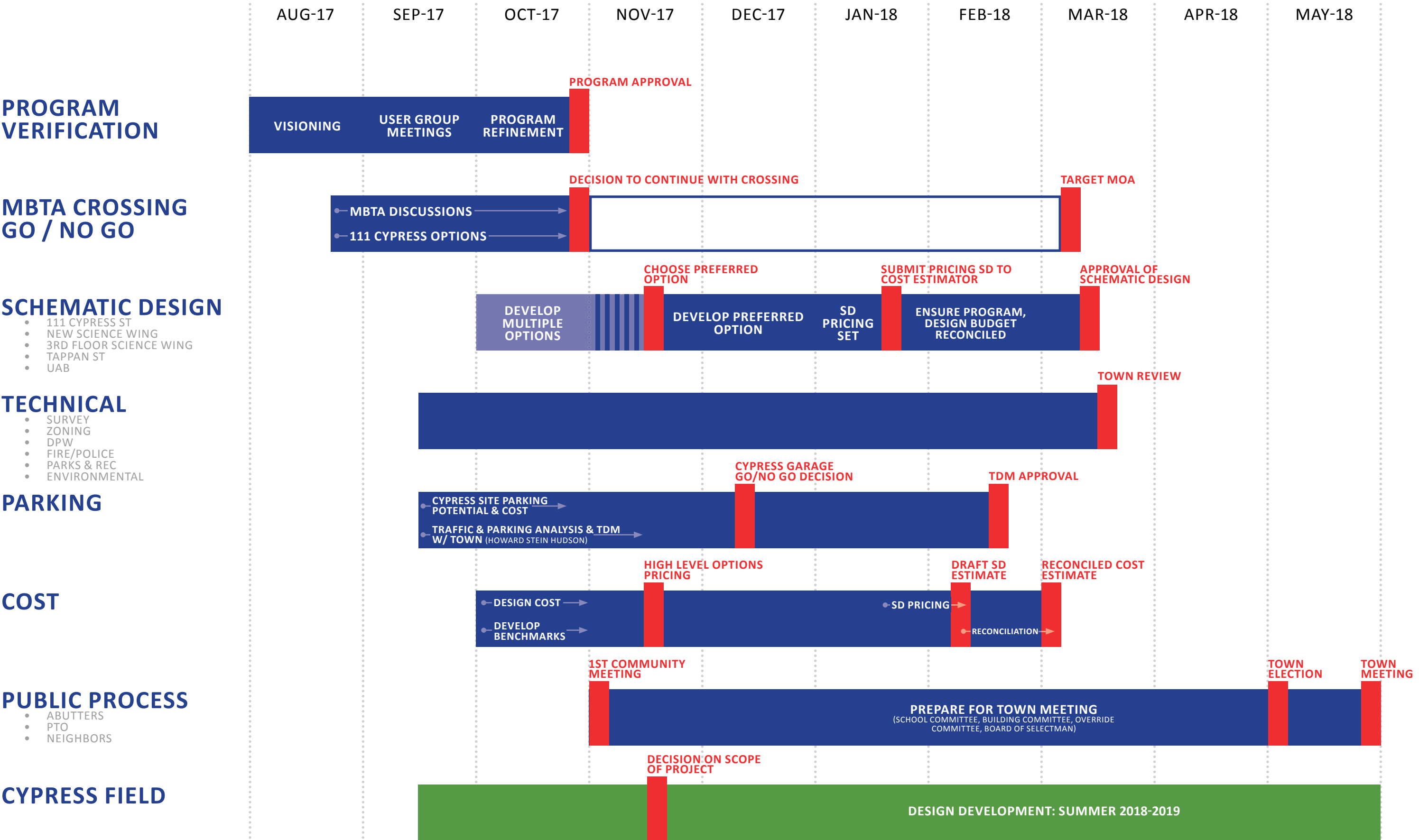


MODEL
DEVELOPMENT



SCHEMATIC DESIGN WORK PLAN - SUMMARY

8 PARALLEL TRACKS



PROGRAM VERIFICATION PROCESS - IDP MEETINGS SEPT 13-15



WHAT DID WE HEAR?

- Current culture of Brookline High School
“We create the culture we want”
- Enhancing BHS culture by fostering
Cross-disciplinary collaboration
- Creating a Two-Way Campus

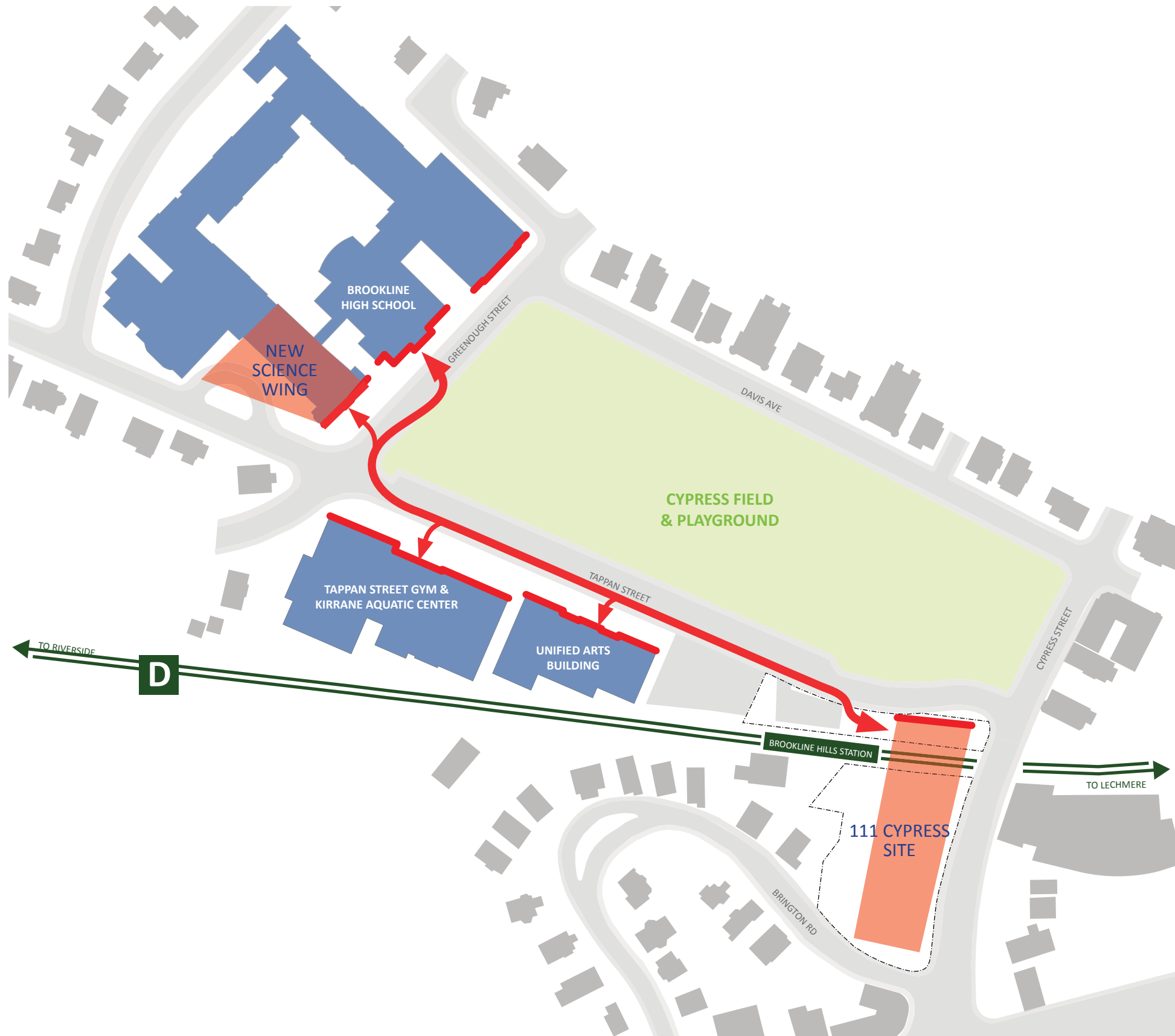


CURRENT CULTURE OF BROOKLINE HIGH SCHOOL



- Culture of open doors
- High degree of collaboration & camaraderie among faculty
- Students connecting with faculty
- 9th graders learning from upper class students
- Diversity embraced rather than stigmatized

CREATING A TWO-WAY CAMPUS



Bring 9th graders to rest of campus

- World Languages (Main Building)
- Electives (UAB/Main Building)
- Health & Fitness (Tappan)

Bring 10-12th graders to Cypress Building

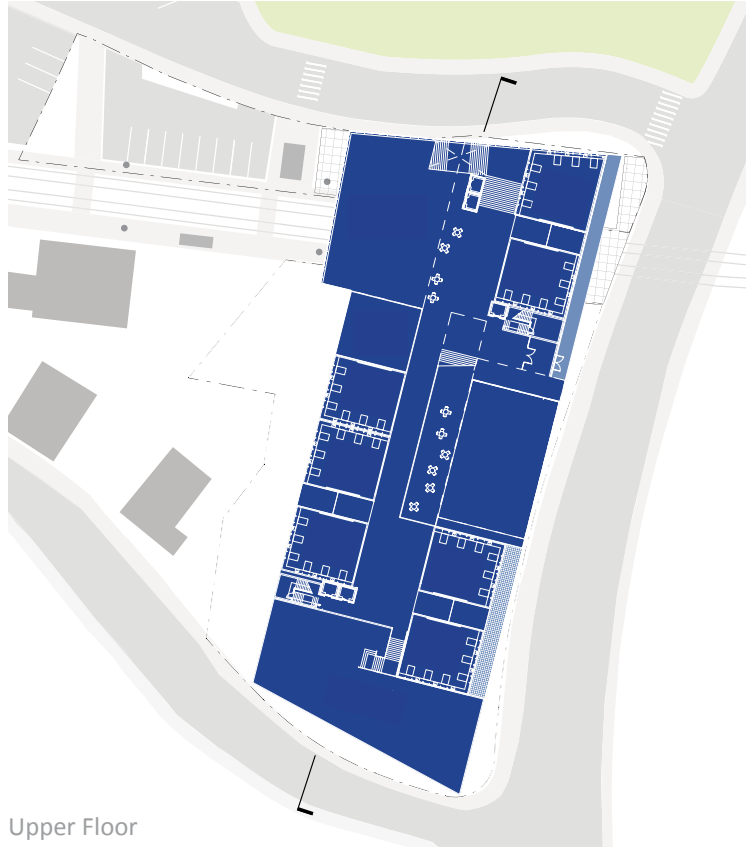
Possible Draws:

- Optional courses:
 - Creative Writing
 - Social & Racial Justice
 - Sagamore (student newspaper)
- Engineering space (move from UAB?)
- AP Physics
- Possible Multi-use whitebox
 - Drama, Dance, Music
 - Guest Speakers for other Classes
 - Interdisciplinary Work
- Digital Music, Photography, Business

APPROVED DIRECTION PER FEASIBILITY STUDY - BUILDING AS BRIDGE



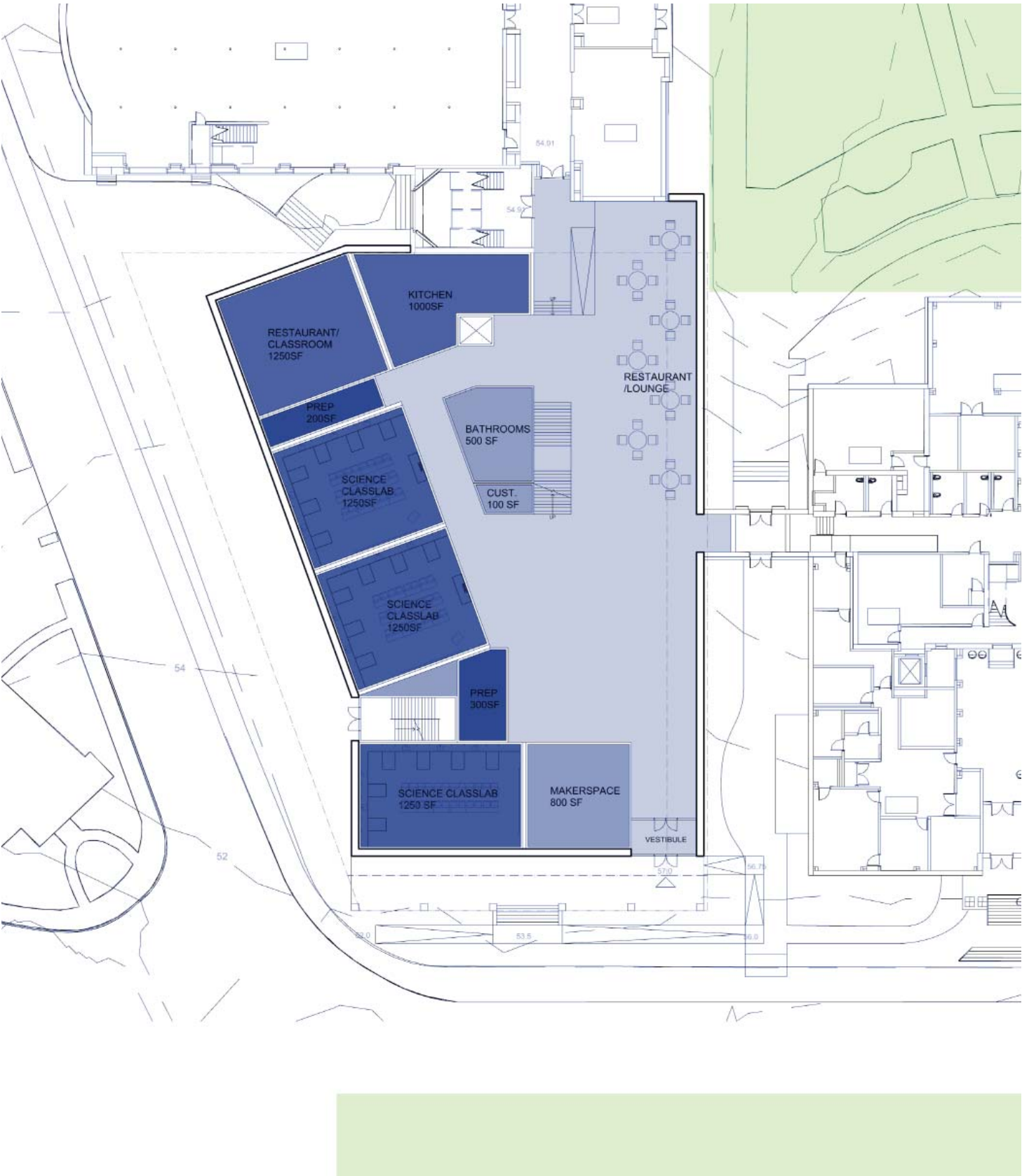
Ground Floor



Upper Floor



SCIENCE WING - SIGNIFCANT STUDENT ENTRY TO MAIN BUILDING



PROGRAM ELEMENTS SUPPORTING EDUCATION PLAN

1. ELECTIVES - ART, DRAMA, MUSIC



2. NEW SCIENCE WING



PROGRAM DISCUSSIONS

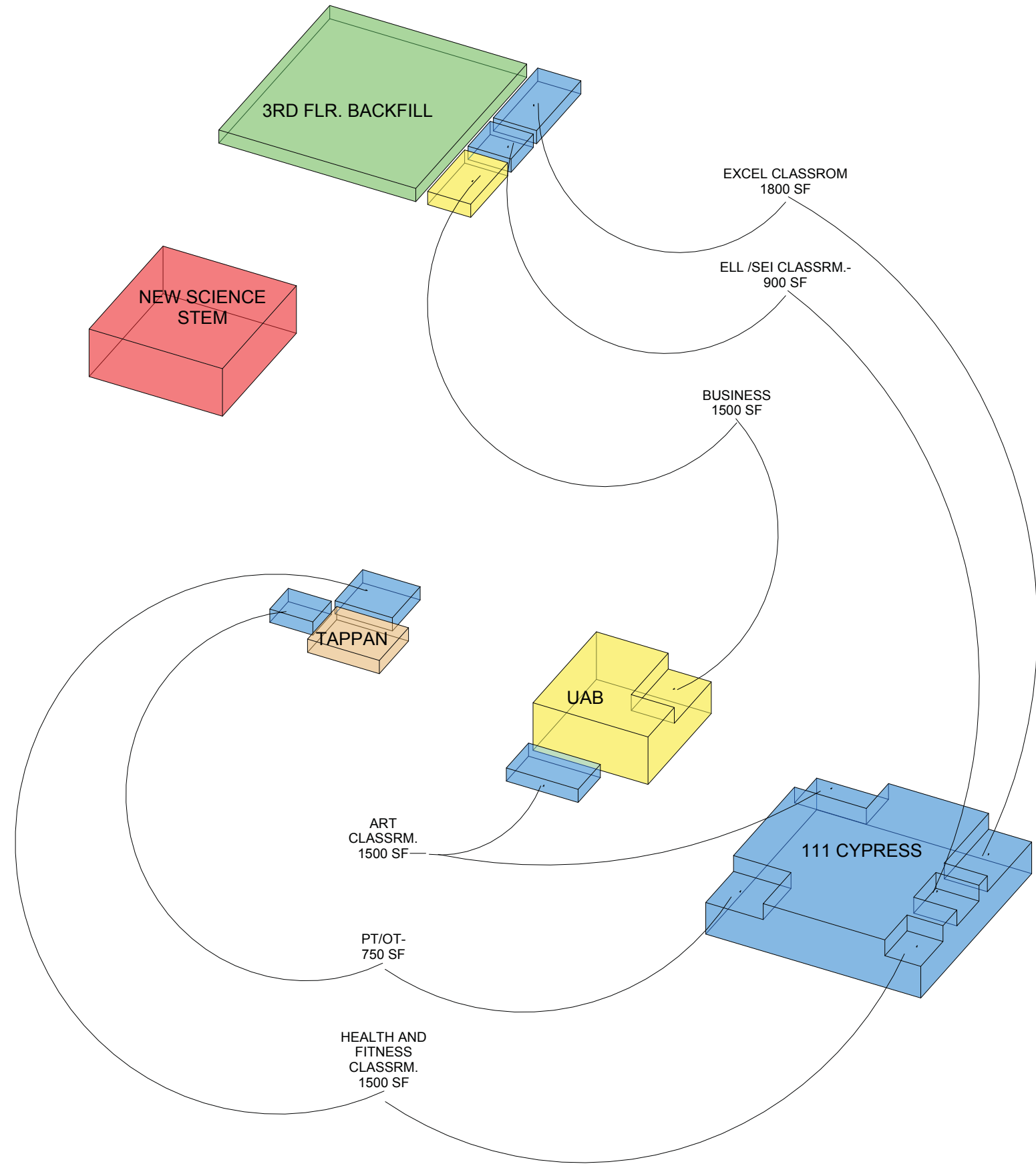
3. TAPPAN GYM



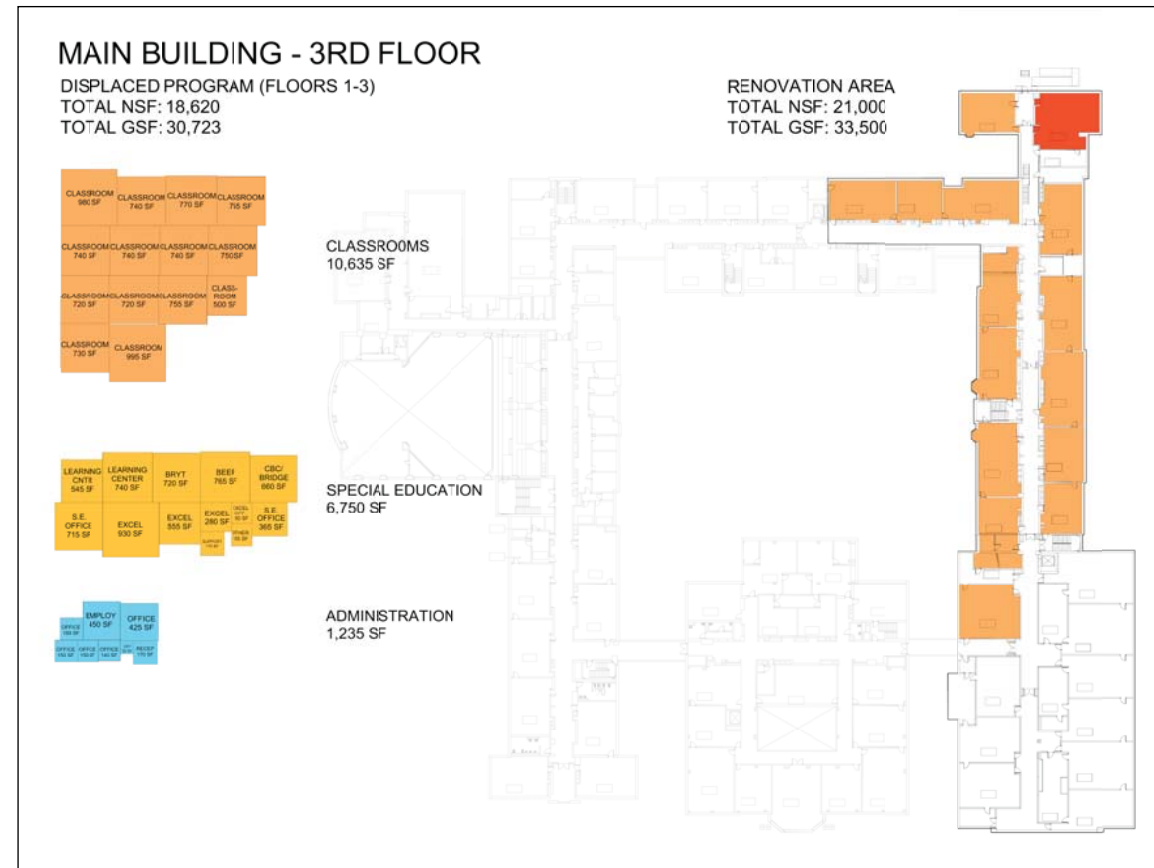
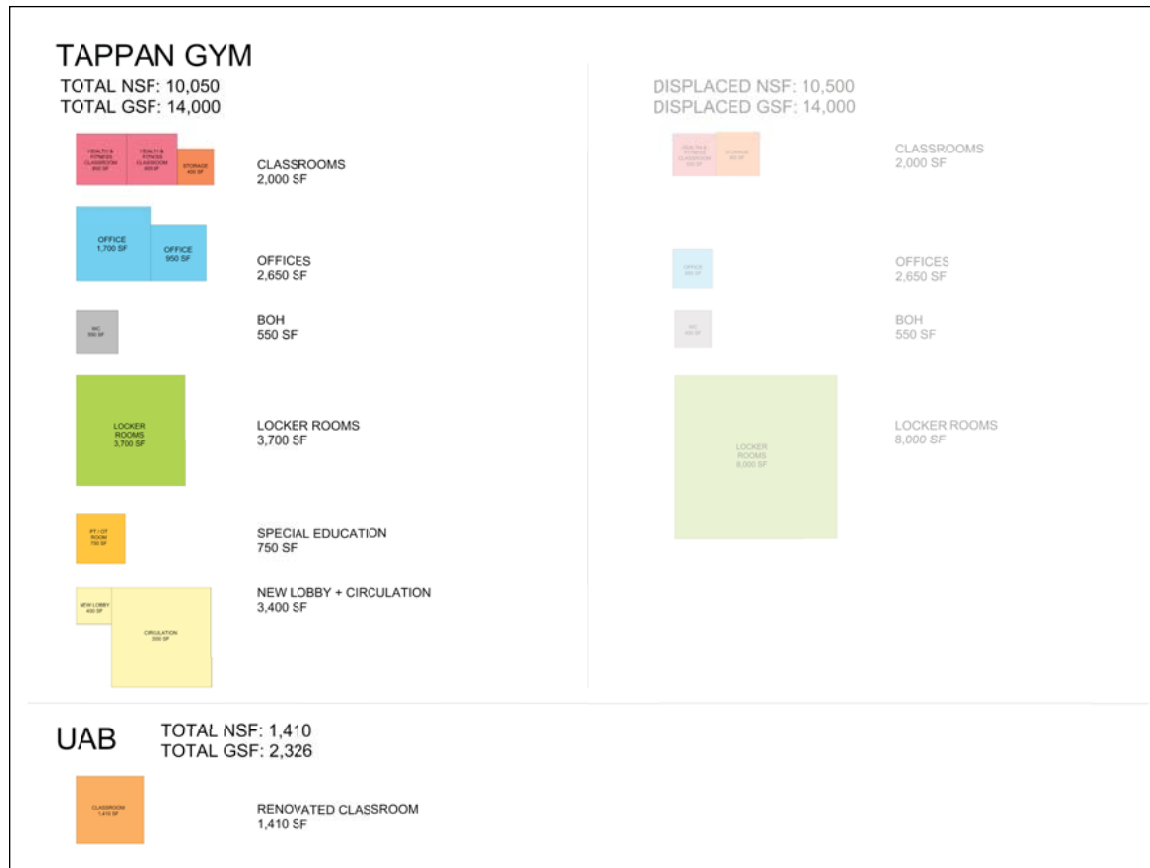
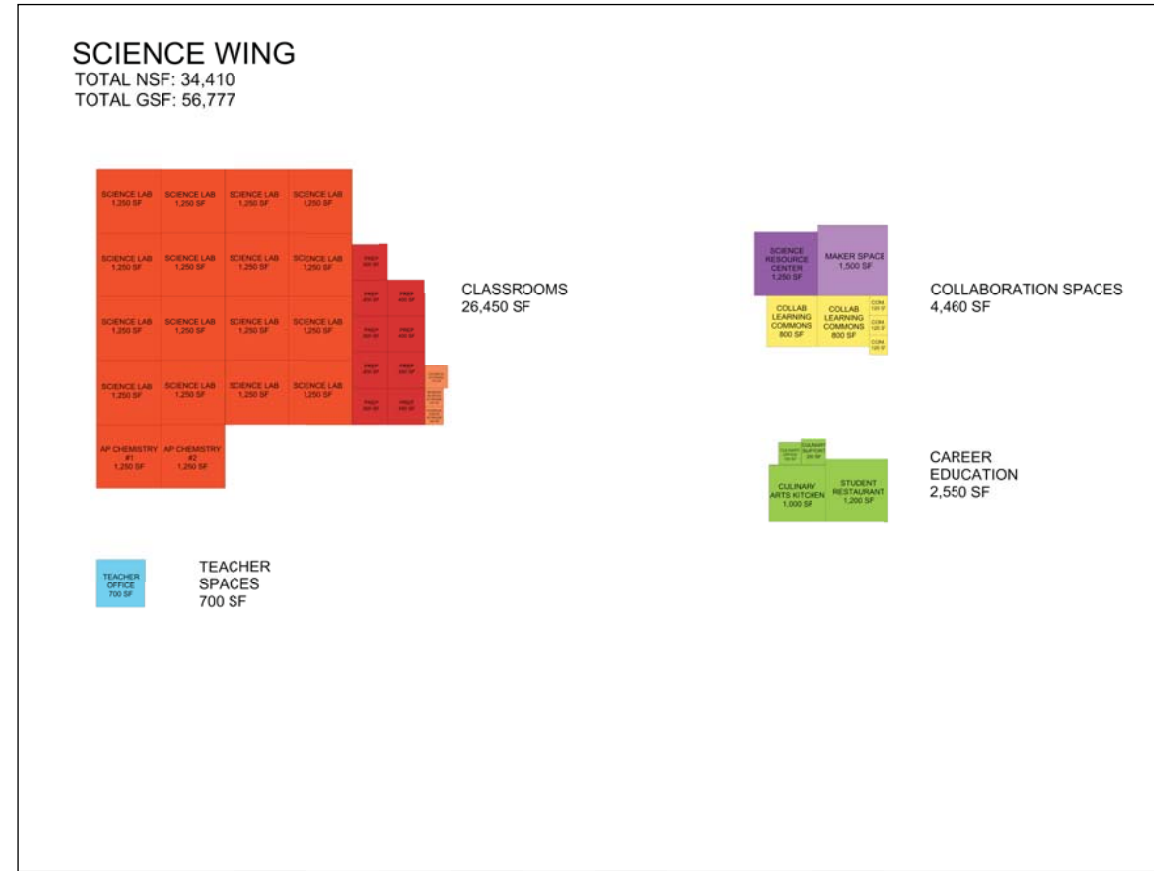
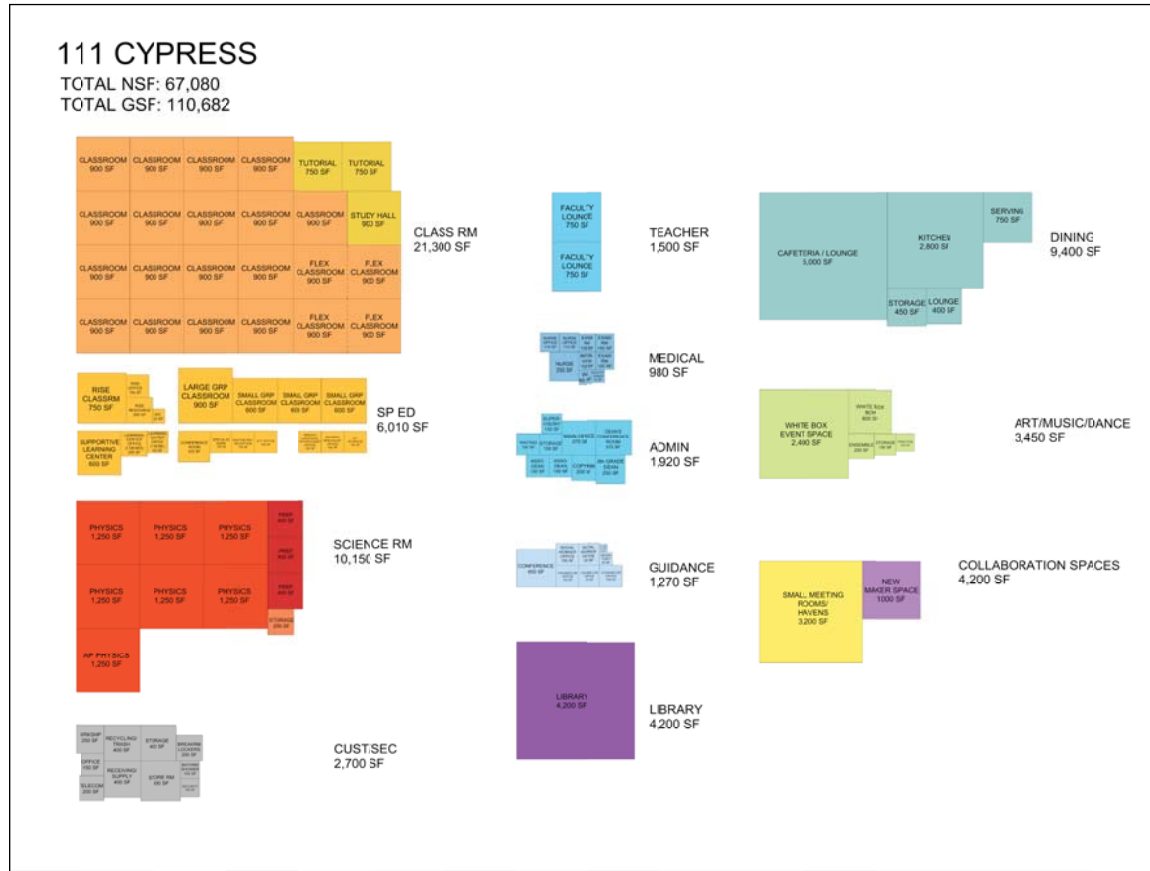
4. 111 CYPRESS



PROPOSED PROGRAM RE-ALLOCATION



PROPOSED PROGRAM RE-ALLOCATION



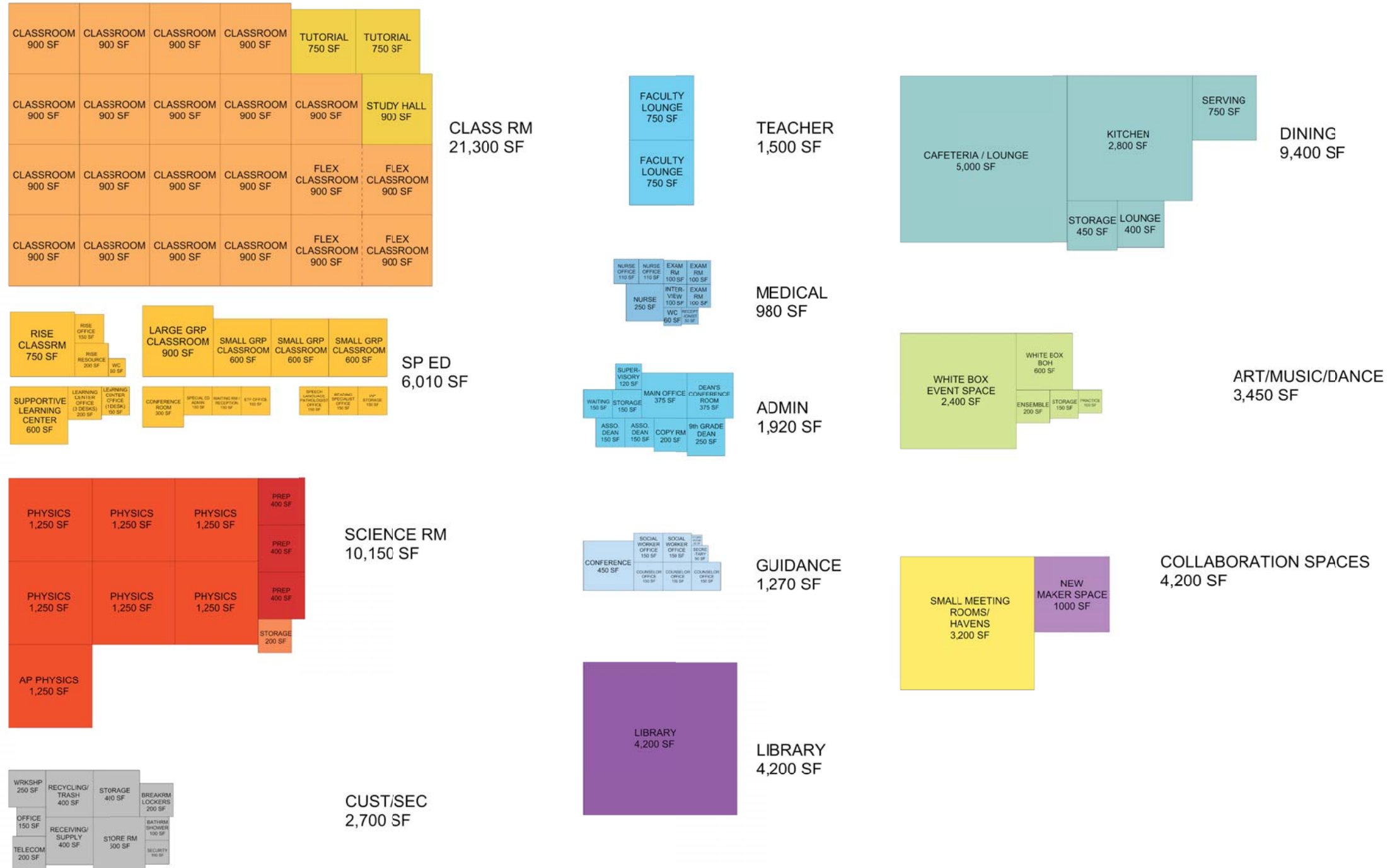
PROPOSED PROGRAM RE-ALLOCATION

TOTAL GSF	
111 Cypress	110,682
Science Wing	56,777
Tappan Gym	14,000
UAB	2,326
Main Building 3rd Floor	33,500
Total GSF	217,285



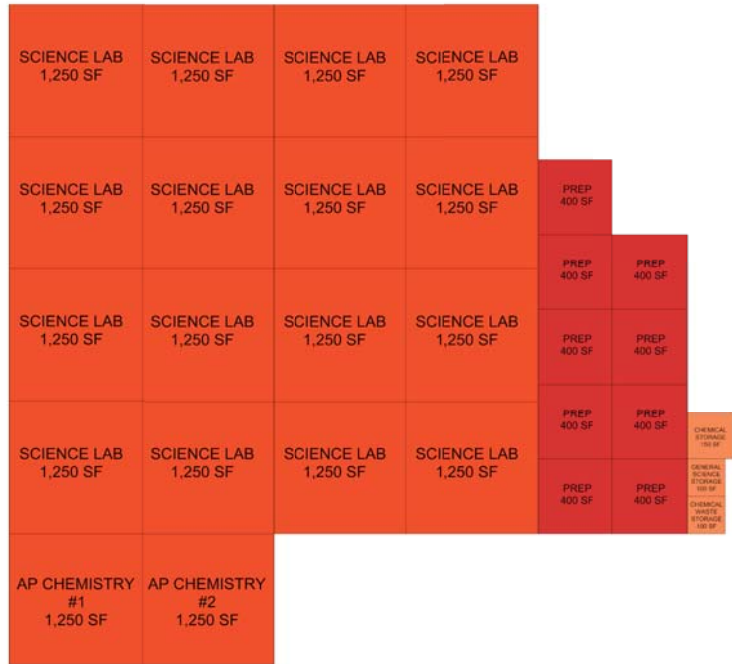
111 CYPRESS STREET

TOTAL NSF: 67,080
TOTAL GSF: 110,682



SCIENCE WING

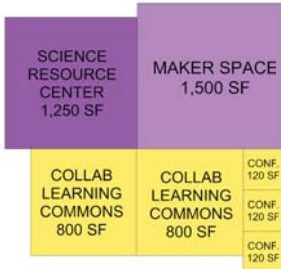
TOTAL NSF: 34,410
 TOTAL GSF: 56,777



CLASSROOMS
 26,450 SF



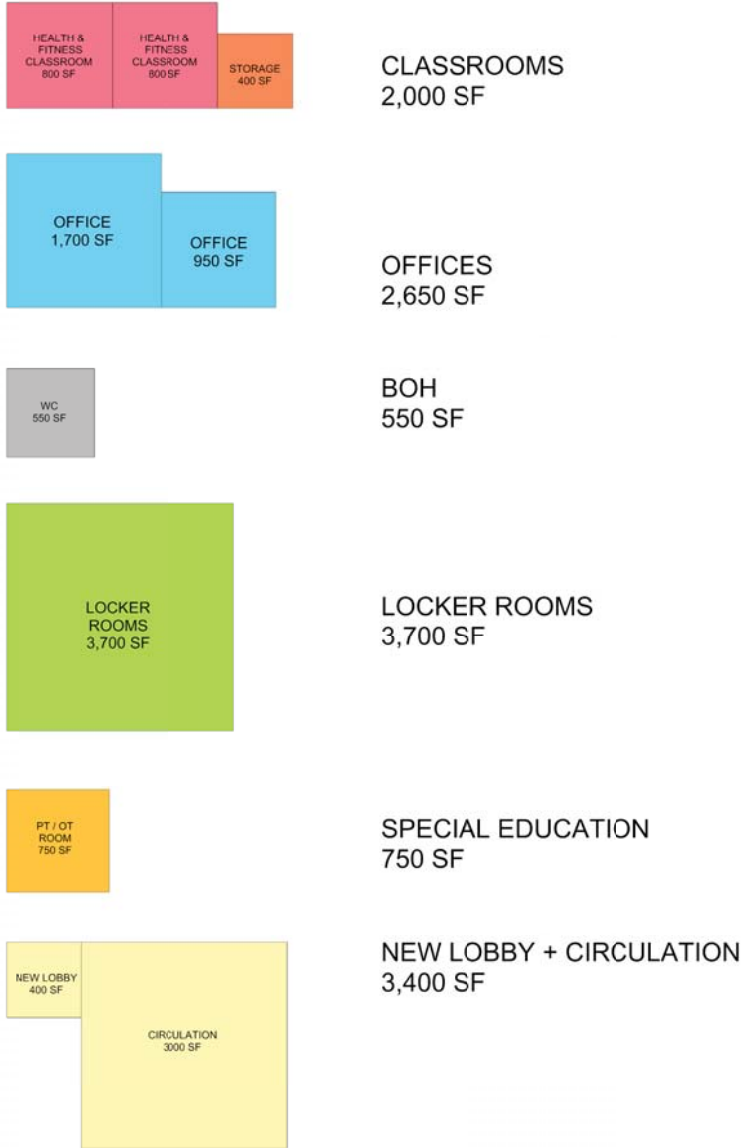
TEACHER SPACES
 700 SF



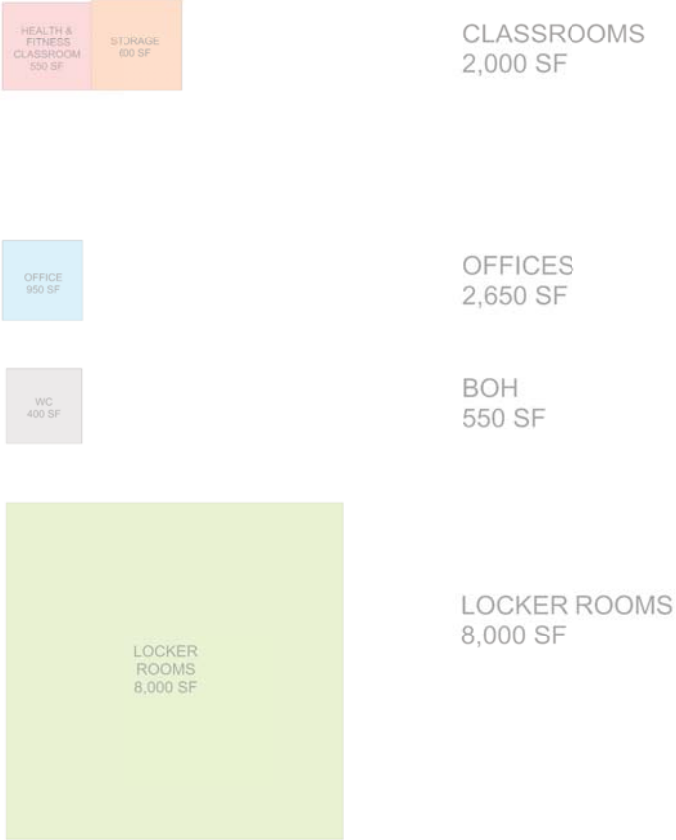
TAPPAN GYM & UAB

TAPPAN GYM

TOTAL NSF: 10,050
TOTAL GSF: 14,000



DISPLACED NSF: 10,500
DISPLACED GSF: 14,000



UAB

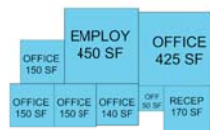
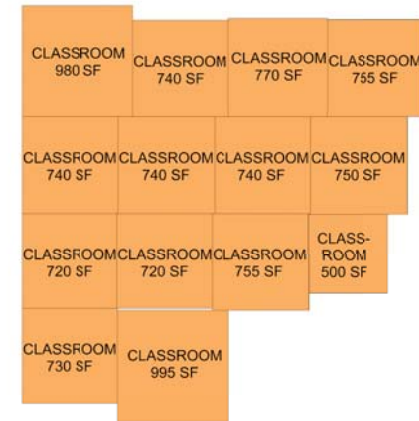
TOTAL NSF: 1,410
TOTAL GSF: 2,326



MAIN BUILDING - 3RD FLOOR RENOVATION

DISPLACED PROGRAM (FLOORS 1-3)
 TOTAL NSF: 18,620
 TOTAL GSF: 30,723

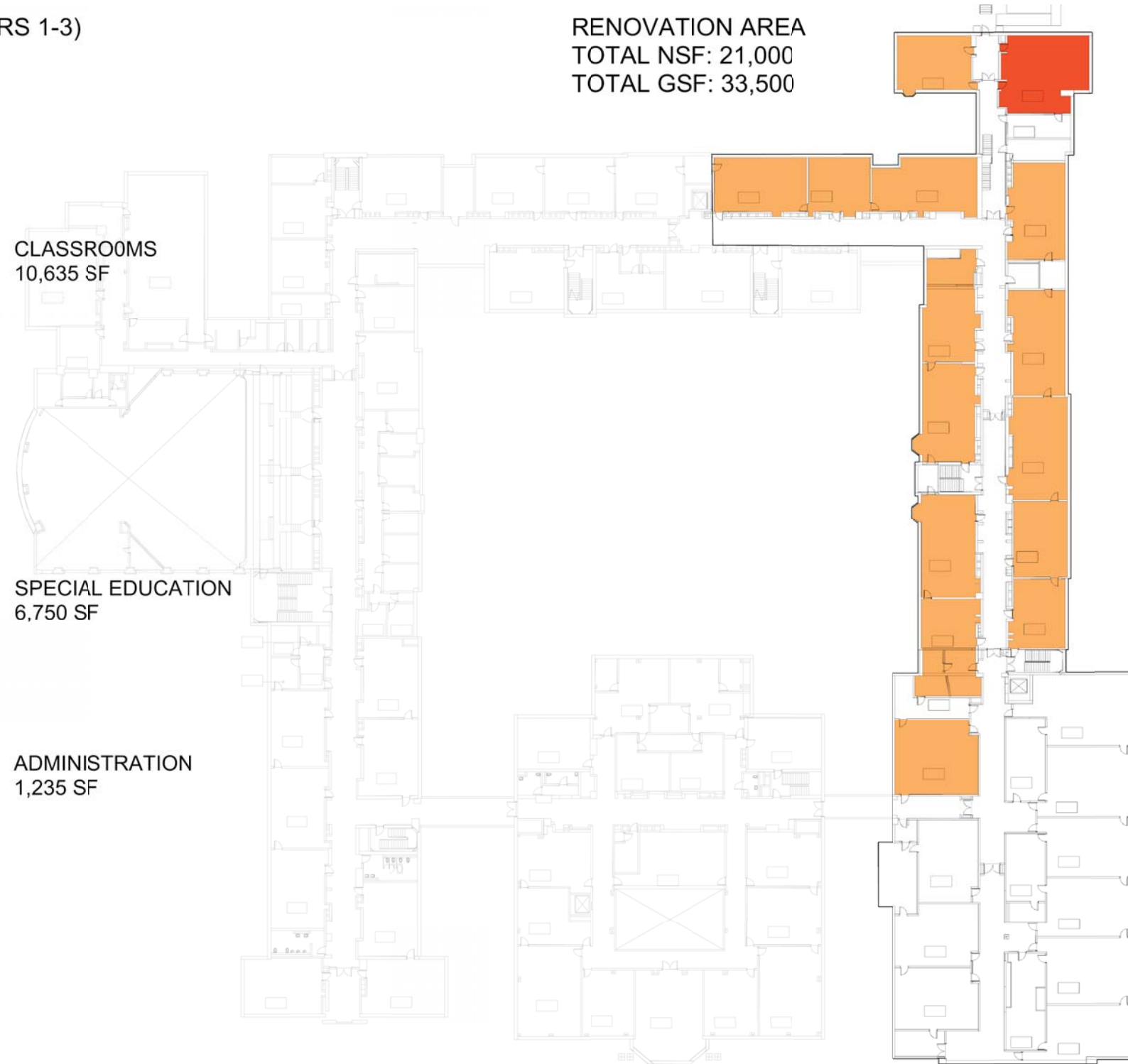
RENOVATION AREA
 TOTAL NSF: 21,000
 TOTAL GSF: 33,500



CLASSROOMS
 10,635 SF

SPECIAL EDUCATION
 6,750 SF

ADMINISTRATION
 1,235 SF



SUPPORTING BHS COMMUNITY & INTERDISCIPLINARY STUDY

- LIBRARY
- WHITE BOX
- CAFETERIA / EVENT SPACE
- SCIENCE RESOURCE CENTER
- MAKER SPACE
- COLLABORATION MOMENTS / HAVENS



END

